



## Plastic Spools & Reels

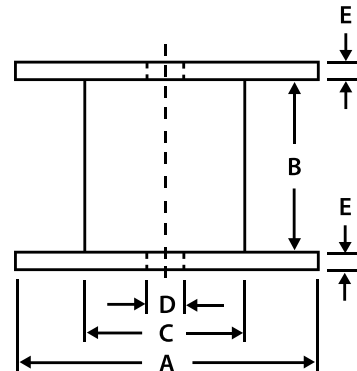
Mossberg's three piece design offers great variety and customization for any project. Our most versatile product line can be used in many industries from medical to wire. This line also offers many safety and quality features over plywood reels.



### Variety and Customization Available with 3-piece Spool and Reel Design

- LIGHTWEIGHT – Ship product, not packaging
- Custom color and branding available
- High Impact Polystyrene and ABS flanges
- Heavy Duty Extruded Barrel
- Minimum Moisture Absorption
- Dimensionally Consistent (No Hardware)
- Consistent Tare Weight
- Shipped Knocked Down or Fully Assembled
- Universal Drive Hole on Standard Equipment
- More Trips per Dollar
- Clean Room Safe
- Recyclable Shipper
- No paper, bolts or hardware

**"Manufacturer of plastic spools and reels for a variety of extruded products. Mossberg has been supplying reels and spools for wire, cable, hose, tubing, tapes, rope and textile for over a century."**



## Three Piece Plastic Spools & Reels

Flange (A)	Traverse (B)	Barrel (C)	Arbor Hole (D)
5"	2" Through 24"	1.88"	.78"
6.5"	2" Through 24"	2"	.78"
6.5"	2" Through 24"	3.5"	.78"
8.5"	2" Through 24"	2"	.78"
8.5"	2" Through 24"	3.5"	.78"
10.5" STD	2" Through 24"	3.5"	.78" and 1.53"
10.5" HD	2" Through 24"	2", 3.5" & 5.5"	.78" and 1.53"
11"	2" Through 24"	3.5" or 5"	1.81"
12"	2" Through 24"	5" or 5.5"	1.53", 1.56" or 1.81"
14"	2" Through 24"	5" or 5.5"	1.53", 1.56" or 1.81"
16"	2" Through 24"	5" or 5.5"	1.53", 1.56" or 1.81"
16"	2" Through 24"	8"	1.28", 1.53" or 2.00"
18"	2" Through 24"	5.5"	1.53"
19.25"	2" Through 24"	8"	1.53"
19.25" HD	2" Through 24"	8"	1.53"
21.5"	2" Through 24"	8"	1.53"
24"	2" Through 24"	5.5"	1.53"
24"	2" Through 24"	8"	1.53", 2.0" or 3.01"